
Broadband Update



Cumberland County is currently partnering with (2) Companies: Firefly and Kinex to provide broadband to Cumberland Businesses and Residents.

Partnerships are Critical to Cumberland County's Broadband Initiative

- Firefly - Central Virginia Electric Cooperative, Dominion Energy, and the Thomas Jefferson Planning District Commission
- Kinex - Cumberland, Prince Edward, and Lunenburg Counties, and the Commonwealth Regional Council



Broadband Update



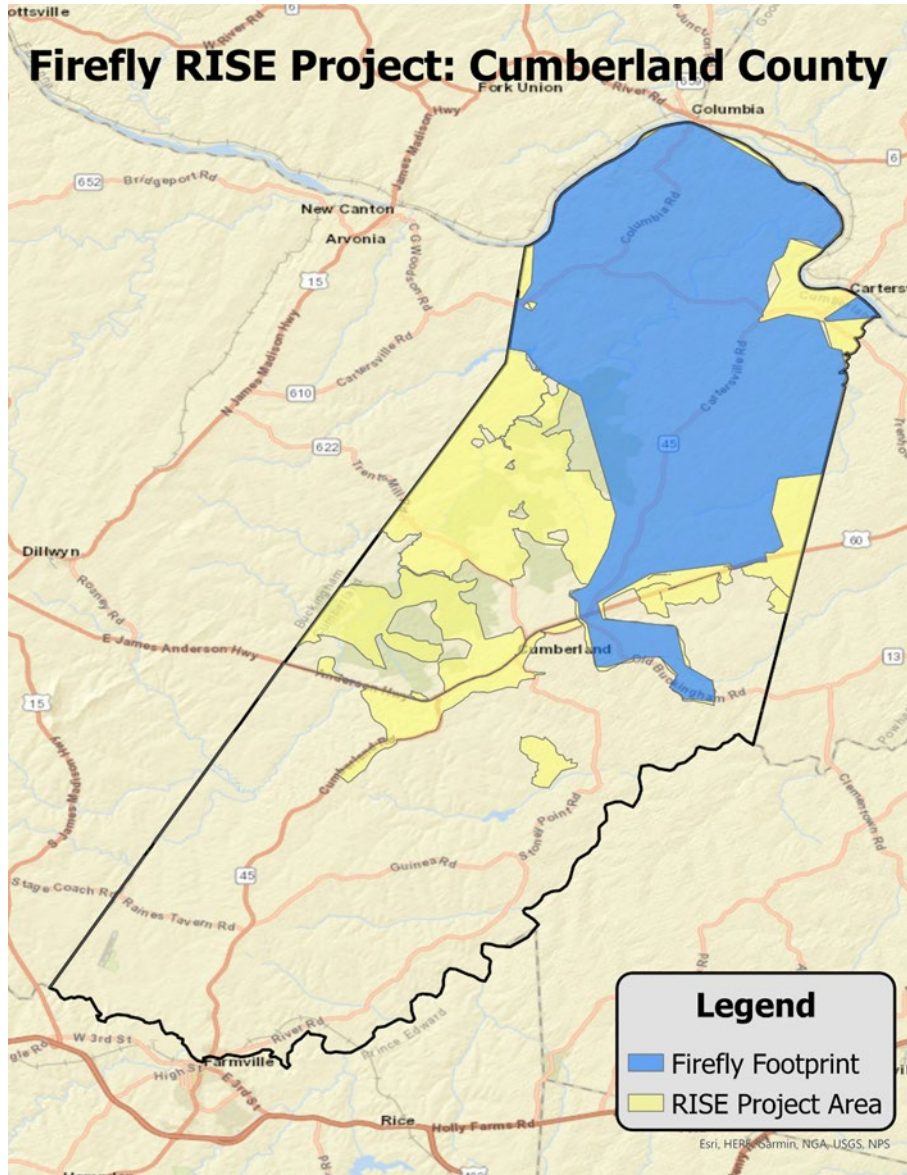
Total Broadband Investment in Cumberland County: ~ \$15,839,060

Total Broadband Funding Invested by Cumberland County: \$586,250 or 3.7% of the Total Cost

Cumberland Funding was accomplished through CARES and ARPA Funding.

Approximately 380 miles of Fiber Total, 4,416 Total Passings

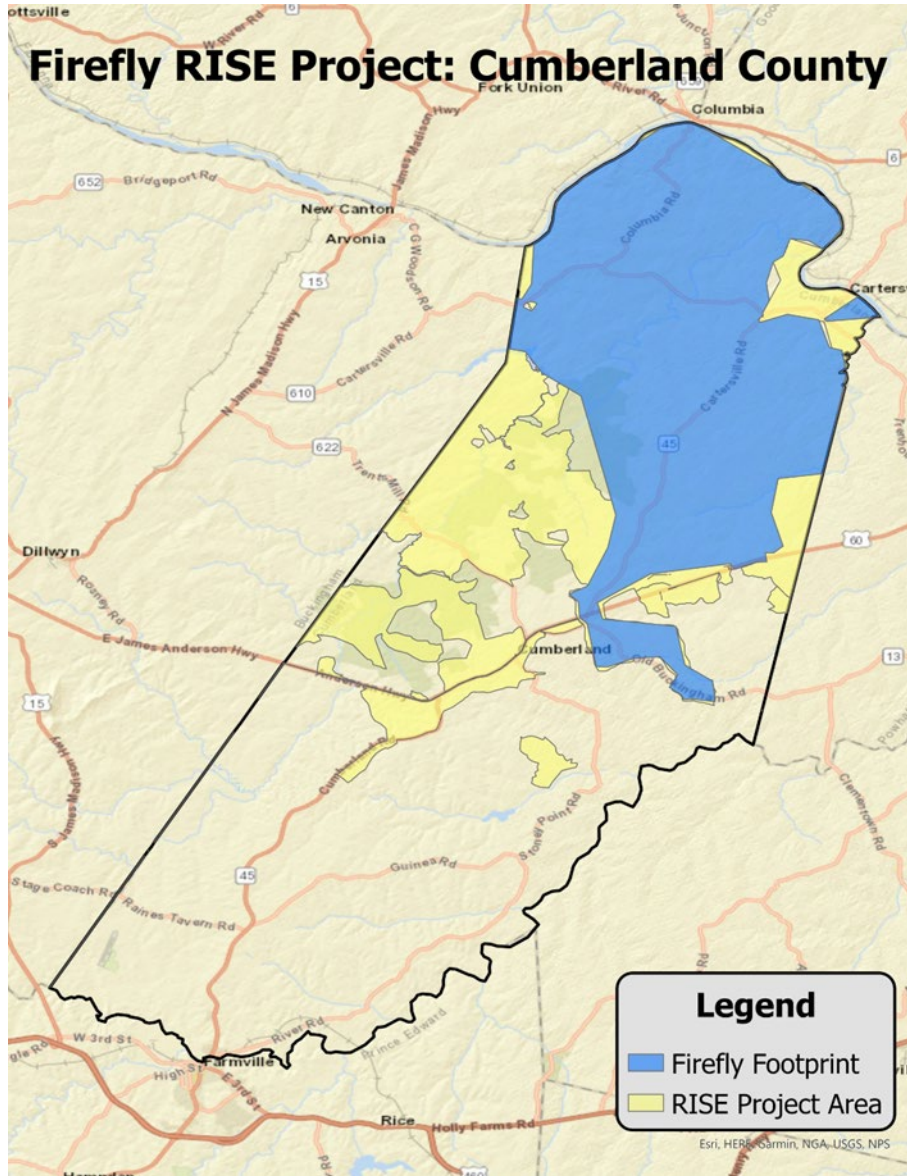




Firefly VATI and RISE Project Highlights for Cumberland County

- VATI Project Total- \$5,759,320, 64 miles of fiber
- CAF Project Total- \$1,579,740, 23 miles of fiber
- Total RISE Project Total- \$7,339,060
- VATI Award Total for County- \$1,017,728
- Approved County Match Contribution- \$386,250
- Total passings within RISE and CVEC- 2,470
- CVEC electric accounts- 1,310
- Total Miles of Fiber – Approx. 140 miles
- VATI Award Total- \$79,027,930

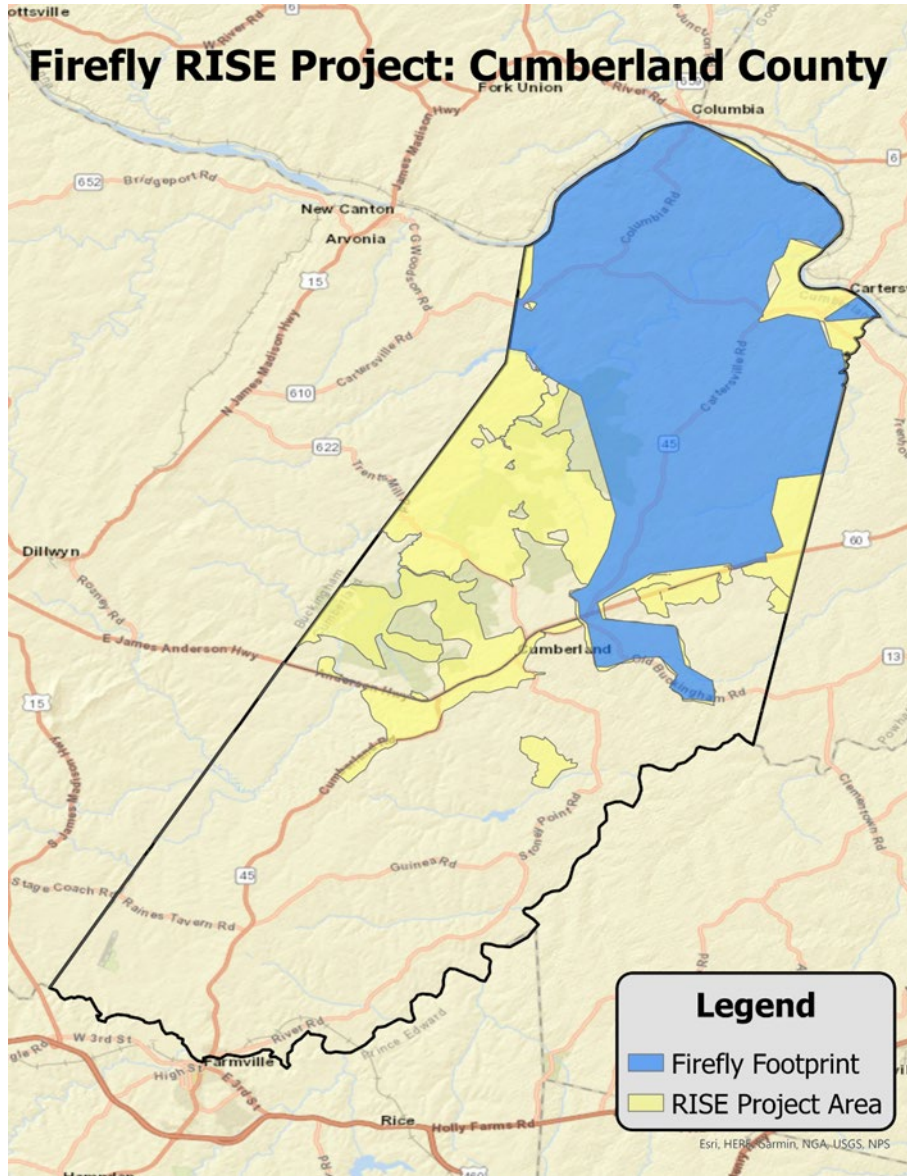




Firefly VATI and RISE Project Highlights for Cumberland County

- Generally, assume six months from start of construction until first in home connections. Will continue to work until all who would like service are connected.
- Each area requires several steps before connections can be made:
 - Data collection (Firefly - NTS)
 - Design (Firefly - Conexon)
 - Make ready engineering
 - Make ready construction
 - Fiber construction (Firefly - S&N)
 - Splicing (Firefly - S&N)
 - Service extensions to homes (Firefly - S&N)
 - Final connection (Firefly)





Residential Services

Firefly Light 100 Mbps	\$49.99
Firefly Flash 1 Gbps	\$79.99
Whole Home WiFi	\$5.99
Firefly Phone*	\$29.99
*Includes \$5 discount with Flash or Light Services	

The Firefly Difference

Whole Home WiFi: Support when you need it most

Lightning Fast: Up to 1 Gbps symmetrical upload and download speeds

Free WiFi Equipment: Get the most out of your speed with the latest technology

Fair Pricing: No hidden equipment costs or price increases after sign-up and no contract

Honest Service: No usage or data caps

Reliable Network: No slowdowns due to weather or too many users online



Have questions on whether your location is in our RISE Project?

Visit: <https://www.fireflyva.com/rise/>

firefly

[About Us](#) [Business](#) [Residential](#) [News & Press](#) [Partners](#) [Help](#) [Login/Play Bill](#) [Check Availability](#)

Firefly is spreading its wings.

The Regional Internet Service Expansion (RISE) Project will bring reliable, affordable fiber internet to more Central Virginians.

[View Construction Updates](#)

[View All Partners](#)



Regional Internet Service Expansion (RISE) Project

Update: December 2021

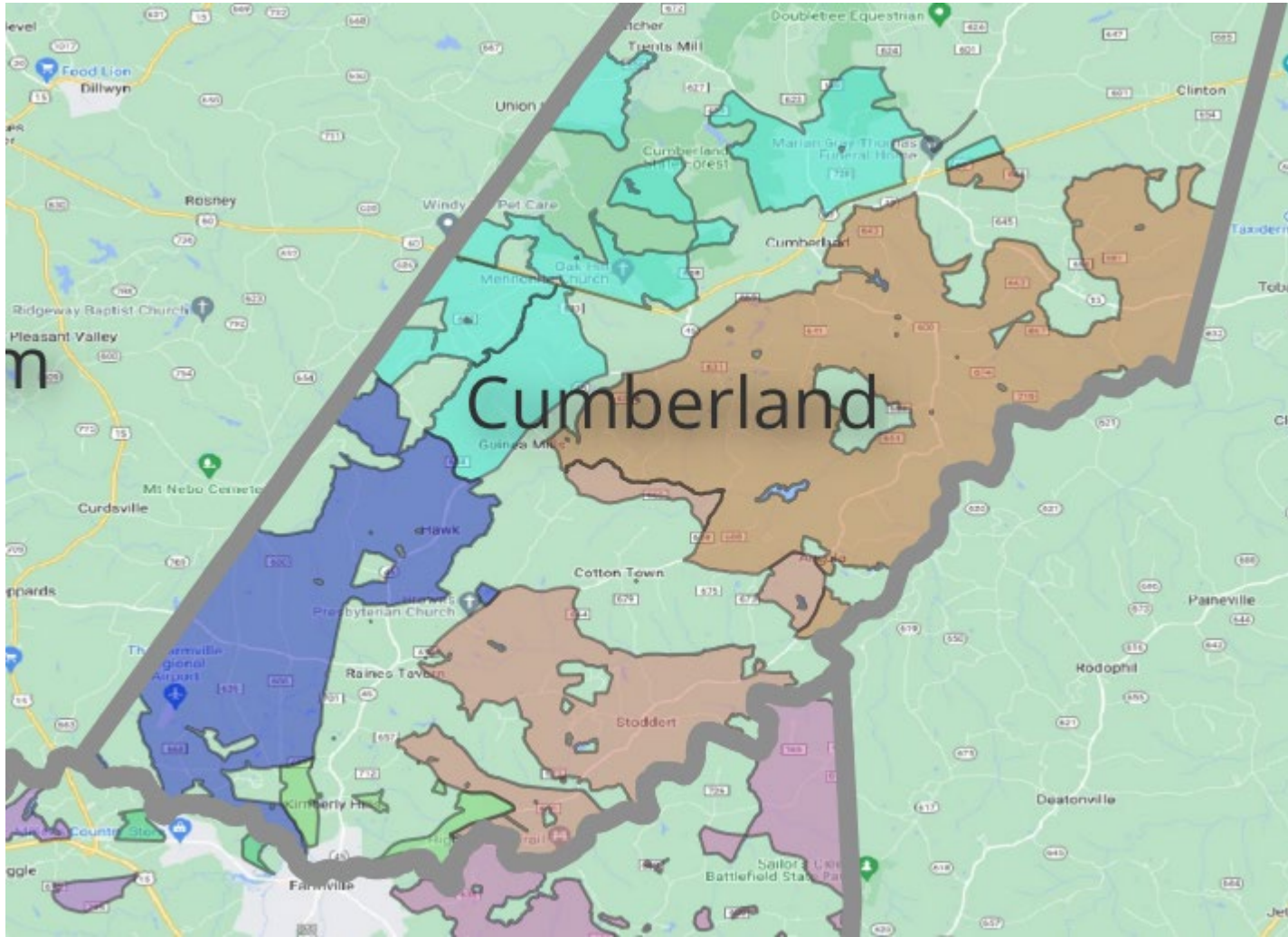
The RISE Project is an initiative by Firefly Fiber BroadbandSM, a wholly-owned subsidiary of Central Virginia Electric Cooperative (CVEC), to provide internet



firefly
FIBER BROADBANDSM

Powered by CVEC





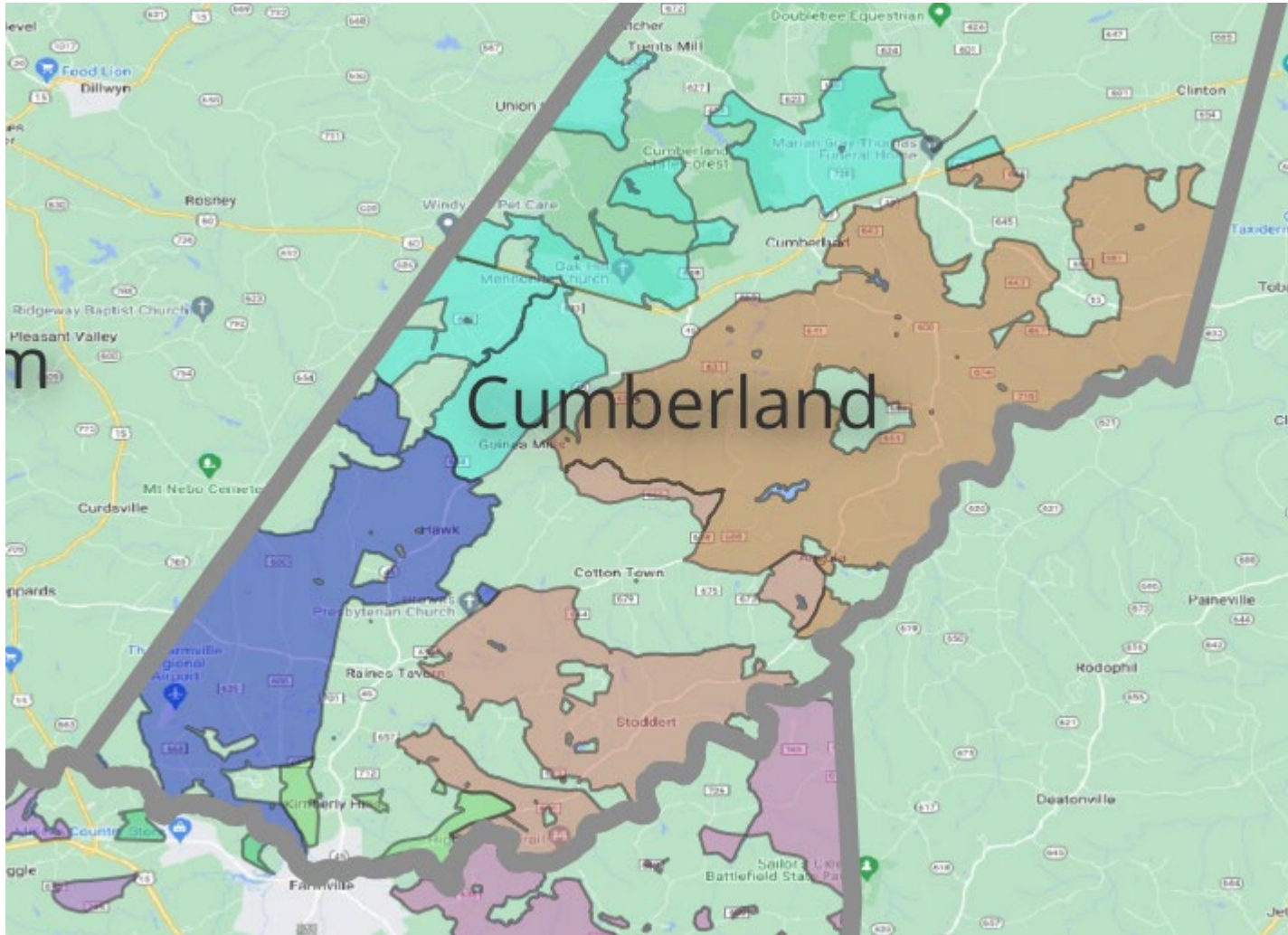
Kinex Broadband Project Highlights for Cumberland County

1,946 total passings, 239 miles of Fiber

Total Project Construction Costs:
\$8,500,000

Construction Timeline: Completed Build
Out 2026

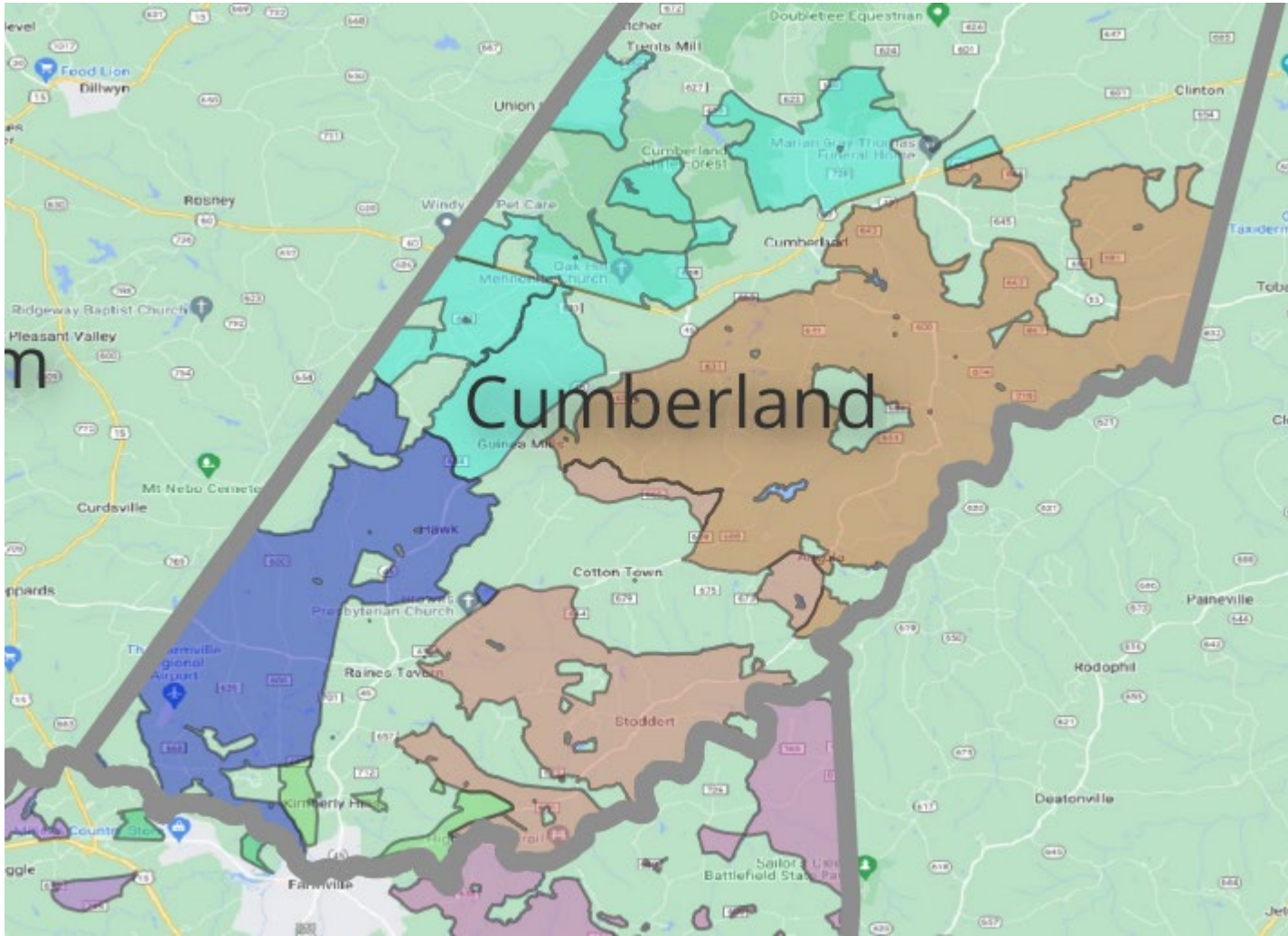




Kinex Broadband Rural Digital Opportunity Fund (RDOF) Project Highlights for Cumberland County

- First 250 miles of project are in Prince Edward and Lunenburg Counties in an effort to meet FCC requirements.
- An incremental increase in coverage will lead to an ultimate completion of Cumberland County by the end of 2024.





Kinex Rates for High Speed Internet

- \$49.95 for 50/10 Mbps
- \$59.95 for 100/20 Mbps
- \$69.95 for 150/20 Mbps
- \$79.95 for 200/20 Mbps
- \$99.95 for 300/50 Mbps

Check construction and Sign Up Status at the Kinex Website

Kinex Website:

<https://kinextel.net>

